

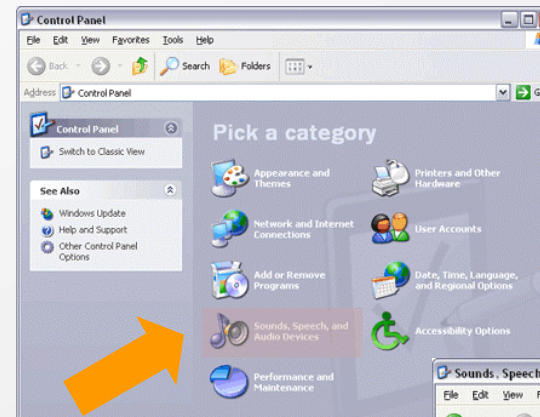
Advanced Audio Setup

Troubleshooting your audio

1. Getting to the Windows Audio Settings

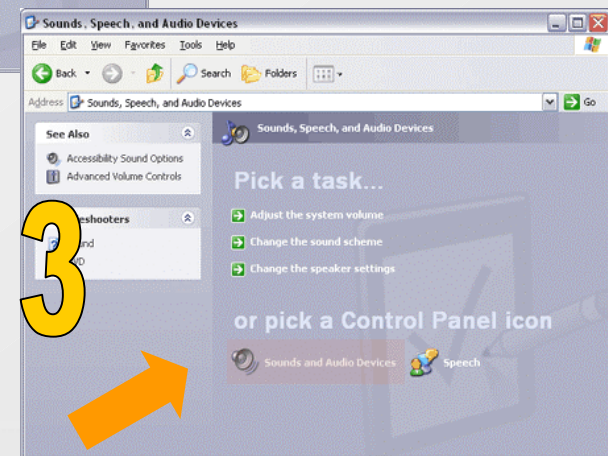


Click on the Start button and continue to the Control Panel section of the Start menu

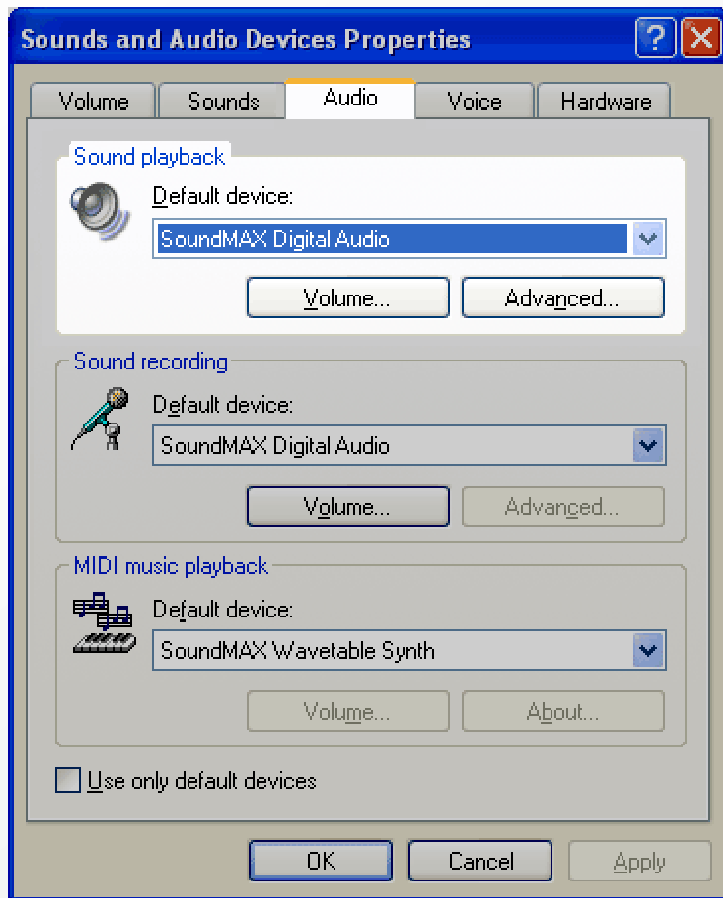


2 In the Control Panel window find Sounds, Speech, and Audio Devices section, click on it.

In the Sounds, Speech, and Audio Devices window find the Sounds and Audio Devices section, click on it.



2 How to Change Playback Options



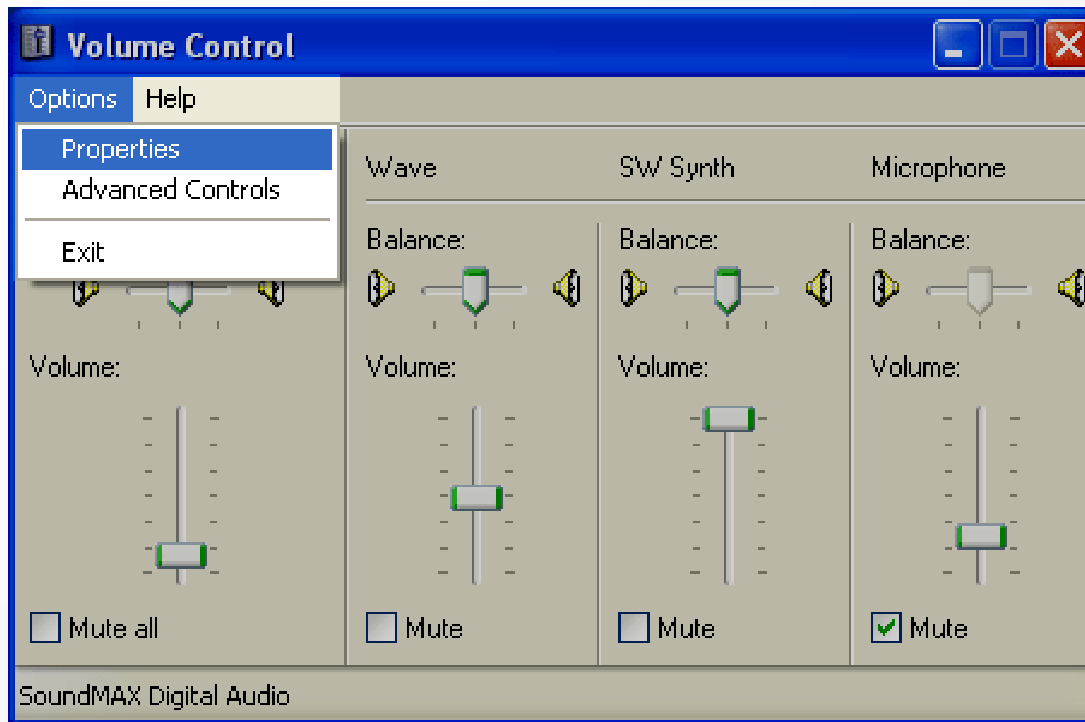
Find the **Audio** section tab (top line of buttons), click on it.

The Audio Settings section will open.

In the Sound Playback section from the drop down menu, select the device that eLecta uses.

Click on the **Volume** button below the drop down menu.

2.1. How to Change Playback Options

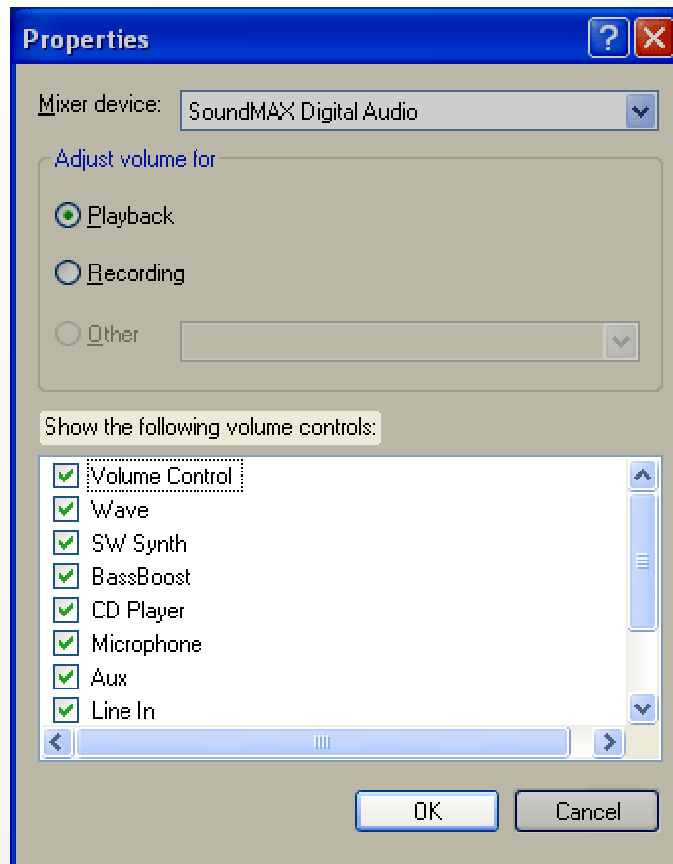


The Volume Control panel will appear

Find the **Options** menu button, click on it

Click on the **Properties** section.

2.2. How to Change Playback Options



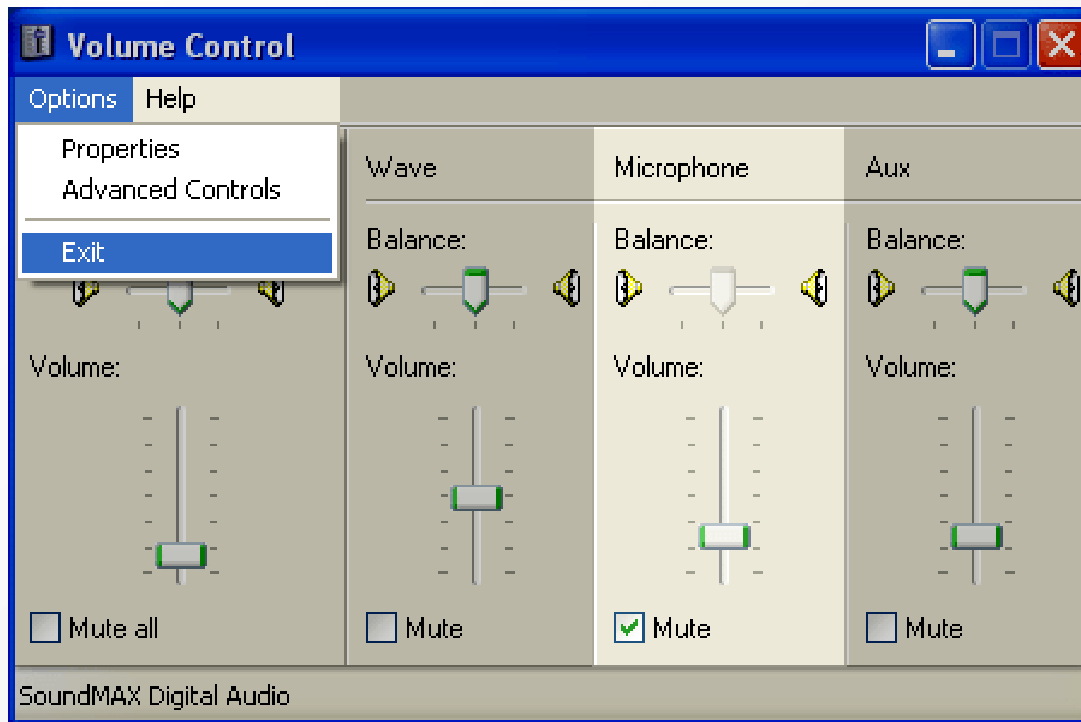
The Properties panel will appear

Find the Show the following volume controls:
section

Check in all the unchecked boxes

Click the **OK** button

2.3. How to Change Playback Options



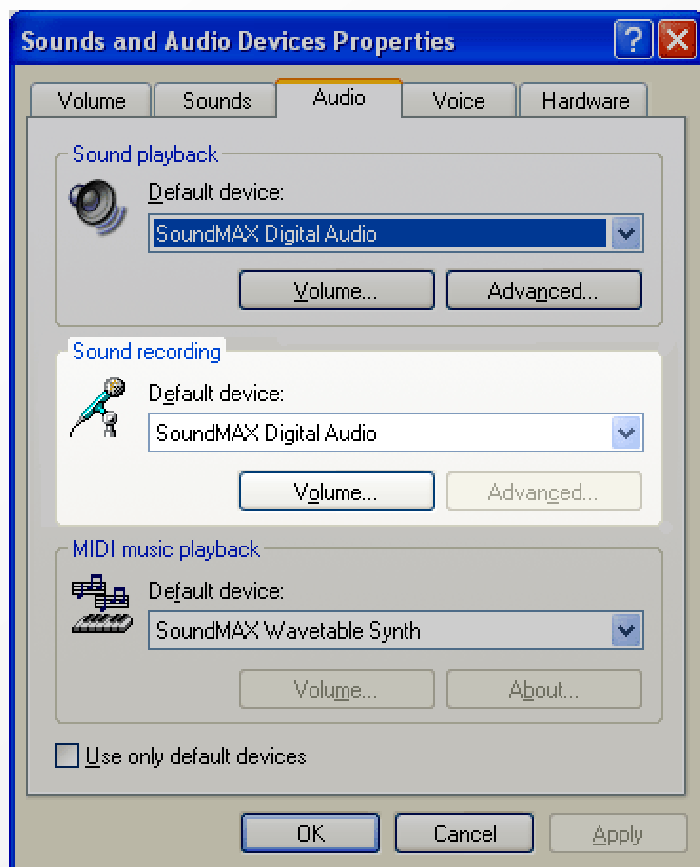
Before you Exit

Make sure that **Microphone volume controllers for playback are muted** in the Volume Control panel

All the other volume controllers **should not be muted**.

Open the Options menu, click on **Exit** section.

3. How to Change Microphone Settings

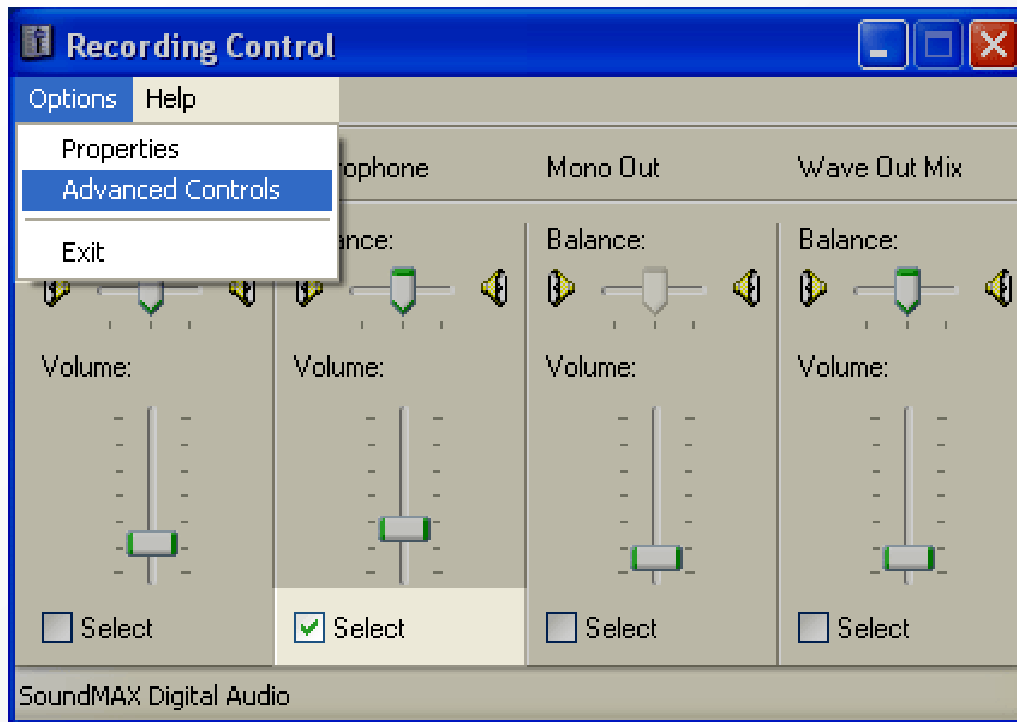


Find the **Sound Recording** section of the Sounds and Audio Devices panel.

In the Sound Recording section from the drop down menu, select the device that eLecta uses.

Click on the **Volume** button

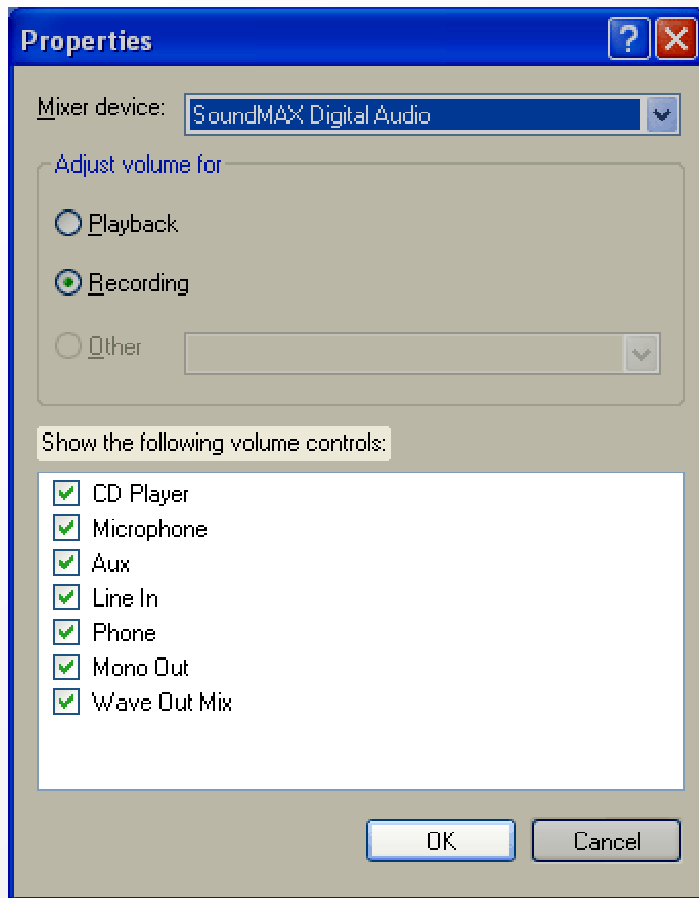
3.1. How to Change Microphone Settings



The **Recording Control** panel will appear

Click on the **Properties** section of the **Options** menu

3.2. How to Change Microphone Settings



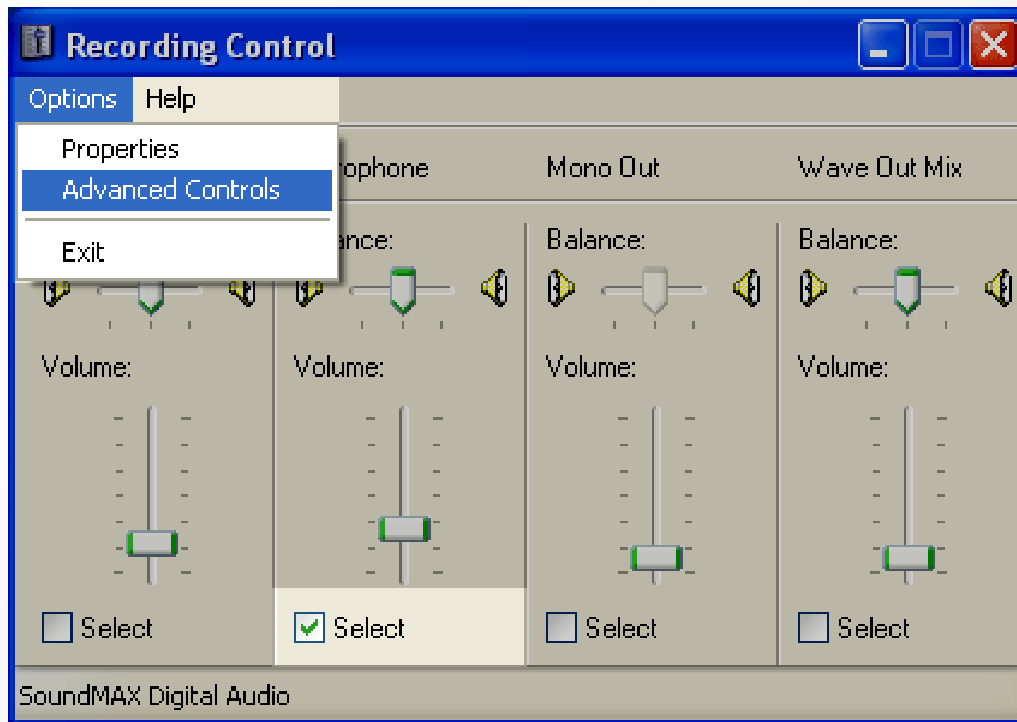
The **Properties panel** will appear

Find the Show the following volume controls section

Check in all the unchecked boxes

Click the OK button

3.3. How to Change Microphone Settings

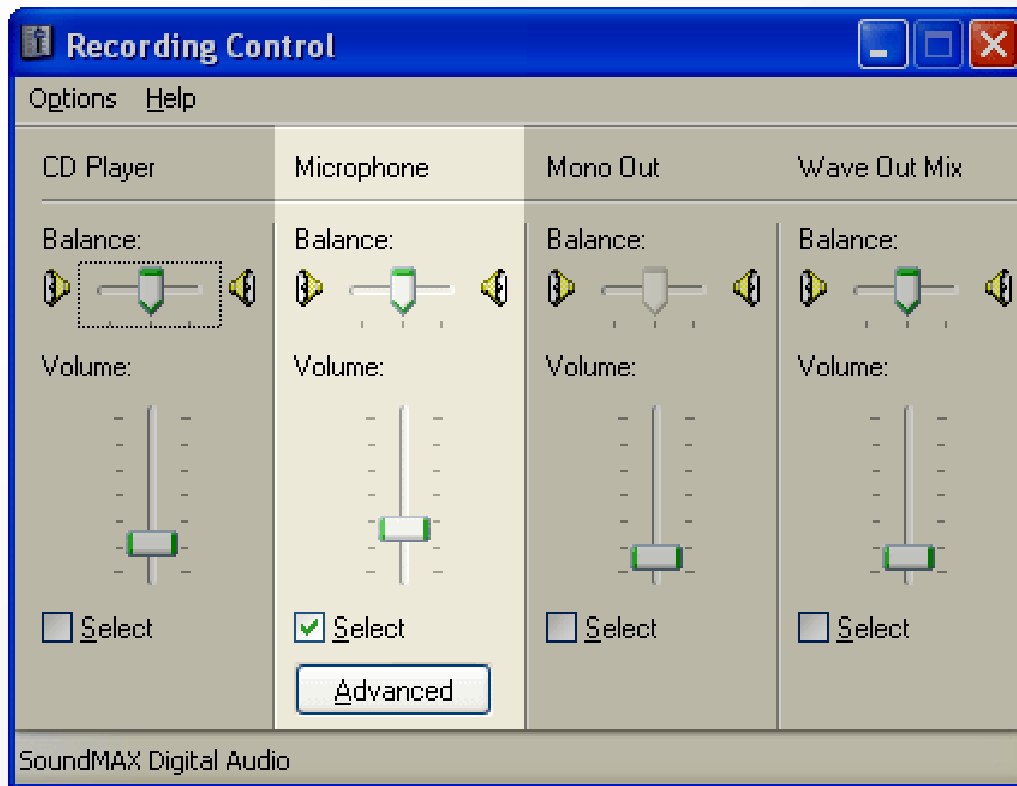


Make sure that **Microphone** volume controllers is checked in the **Recording Control** panel

Find the **Options** menu, click on it

Check if the **Advanced Controls** section is checked in, if not check it in

3.4. How to Change Microphone Settings



Find the **Advanced** button under the **Microphone** volume controller, click on it

The **Advanced Controls for Microphone** panel will appear

3.5. How to Change Microphone Settings



Find the **Other Controls** section

Microphone Boost must be checked off

Click the **Close** button

Finally

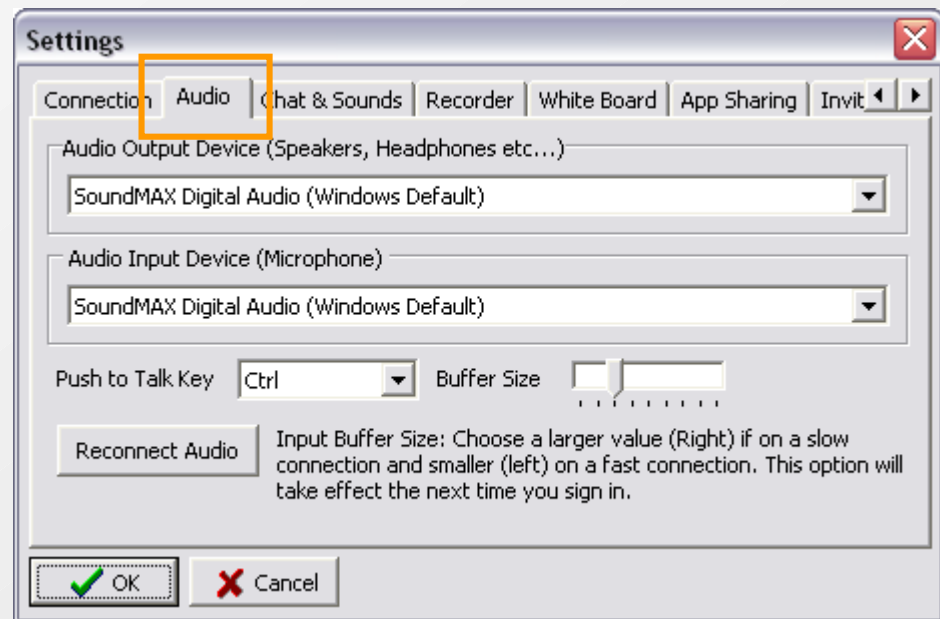
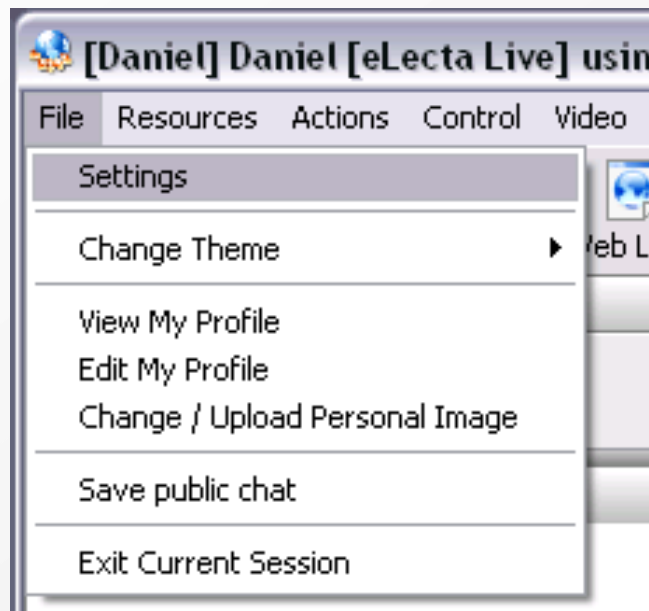
In the **Recording Control** panel find the **Options** menu button, click on it, click on **Exit** section

4. eLecta Audio Settings

Once your microphone and playback are configured you can set your eLecta Audio preferences.

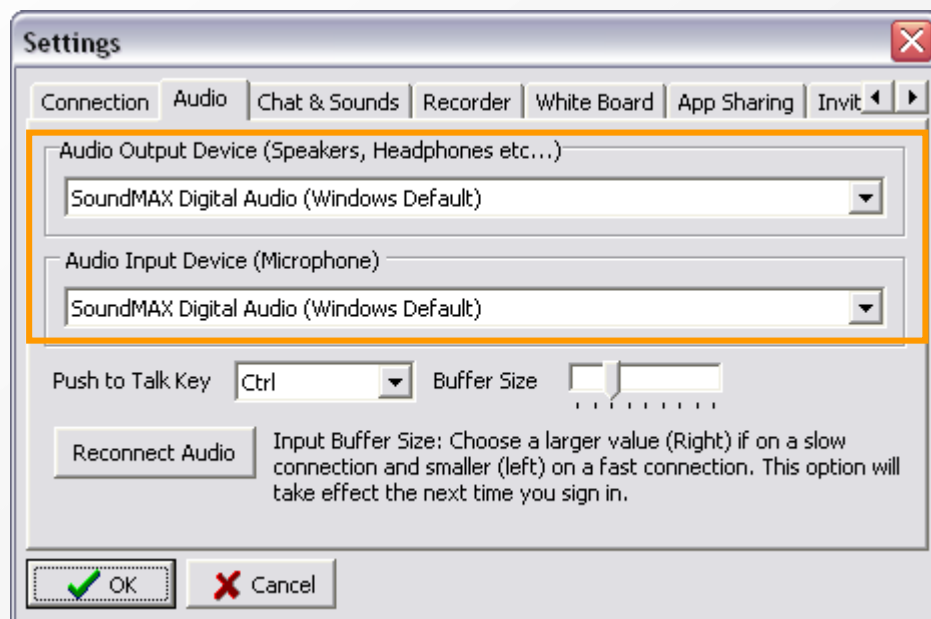
Start eLecta Live and enter a virtual room.

From the **File** menu choose **Settings** and go to the **Audio** tab.



4.1. Choose eLecta Audio Device

Usually you don't need to configure your input and output device unless you need to use a device different than the one configured as the default Windows devices. This may be required in case using a USB microphone or a USB headset.

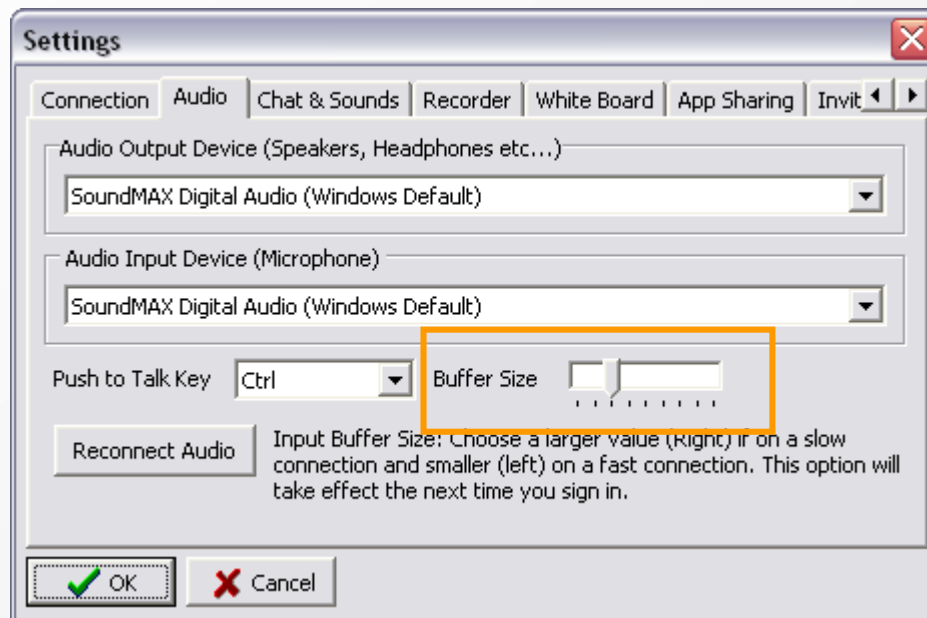


The **Audio Output Device** section represents your playback device (headset, speakers etc.)

The **Audio Input Device** section represents your recording device (a microphone).

4.1. Better Audio on a Slow Connection

Sometimes when you or the presenter is running on a slow connection your audio may start breaking.. You can manually configure the system to increase the audio delay and reduce the breakdowns.



For normal or fast connection such as LAN or ADSL move the **Buffer Size** slider to the **left**.

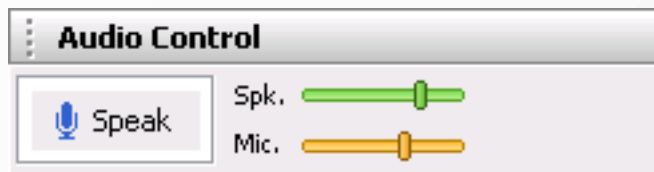
If a modem user or if the sound you hear is breaking a lot then move the **Buffer Size** slider to the **right**. This will reduce the audio jittering but will increase the audio delay.

This setting will take effect after restarting the application

Generally you don't need to configure this unless you found problems.

4.2. eLecta Volume Control

While in a live session you can adjust your playback and microphone volume control.



Microphone Volume

The Orange (Mic) slider controls the volume of your microphone.

To increase the volume move the slider to the right. If you need to decrease your microphone volume move the slider to the left.

Playback Volume

The green "**Speaker**" slider controls the volume of your speakers (headset). If you hear the other attendees too loud then **decrease** the output level by moving the slider to the **left**.

To **increase** your speakers volume move the slider to the **right**.